

# Artificial Intelligence and Machine Learning

Artificial Intelligence is a branch of computer science that focuses on creating systems capable of performing tasks that normally require human intelligence. Machine Learning is a subset of AI that allows machines to learn from data and improve over time without being explicitly programmed.



## Pursuing AI/ML at MIT Mumbai

### 1. Focused Curriculum on Future Technologies

- These programs are often industry-aligned with core subjects like:
  - Deep Learning, Computer Vision, NLP
  - Python, Tensor Flow, PyTorch
  - Data Science & Analytics
- Some programs also integrate **cloud**, **DevOps**, and **full-stack** development to complement AI/ML.

This gives students a head start on real-world, in-demand skills.



### 2. Industry Collaboration & Internships

- MIT has active industry tie-ups and MoUs with tech companies and startups.
- Students often get opportunities to:
  - Work on live AI projects
  - Do industry internships in 3rd and 4th year
  - Attend guest lectures and hackathons

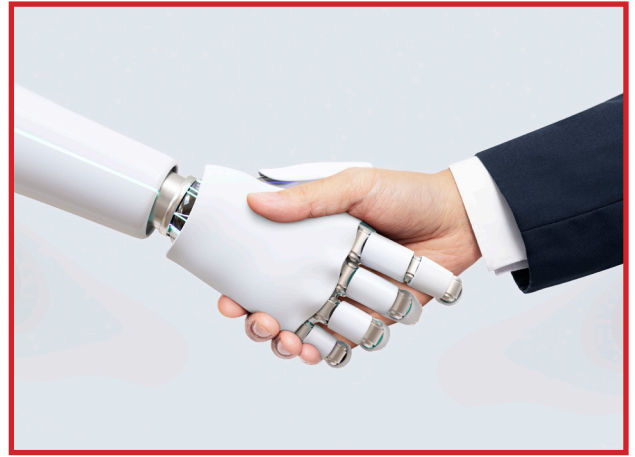
These hands-on experiences are critical for CS/AI/ML careers.



### 3. Growing Demand for AI/ML Skills

- AI/ML engineers are in high demand in fields like:
  - Healthcare, finance, robotics, autonomous vehicles
- Even students from non-IIT/NIT backgrounds can land great jobs **if they're skilled**.

With focused preparation, MIT students can compete for roles in data science, AI engineering, and even research labs.



### 4. Global Tech Exposure

- MIT institutions offer:
  - Capstone projects with international universities
  - Research paper opportunities in AI
- This helps students prepare for MS or PhDs abroad in AI/ML too.



### 5. Flexible, Modern Learning Environment

- Emphasis on **project-based learning** and continuous assessments.
- Dedicated **labs for AI, data science, IoT**, etc.
- Access to **NVIDIA DLI**, IBM labs, and Google Cloud for AI tools.



### 6. Opportunities beyond Academics

- Strong **tech clubs** and AI/ML-focused groups.
- Hackathons, coding competitions (e.g. Smart India Hackathon), Kaggle, etc.
- Entrepreneurship support if students want to launch **AI-based startups**.





MIT's AI/ML programs are **modern, relevant, and practical**, especially for students who:

- Want to build strong portfolios
- Are aiming for **industry roles** in AI/ML
- Are open to learning beyond just the classroom

### Certificate courses on AI/ML at MIT Mumbai

- Deep Learning with TensorFlow & PyTorch
- Natural Language Processing (NLP)
- AI for Computer Vision
- Applied Data Science & Analytics
- ML Ops & Model Deployment
- AI on the Cloud (AWS / Azure / GCP)
- Ethics, Bias, and Explainable AI
- Capstone AI/ML Projects Lab



### Bonus Courses (Emerging Areas)

- Generative AI & LLMs: Prompt engineering, ChatGPT API, diffusion models
- Reinforcement Learning: Agents, environments, deep RL with OpenAI Gym
- AI in Finance / Healthcare / Robotics: Domain-specific applications

### Method to Deliver These Courses at MIT Bombay:

- Invite industry experts for workshops (e.g., from TCS, Google, NVIDIA)
- Offer certifications via Coursera, edX, or co-branded with Microsoft, AWS, etc.
- Include hands-on labs, hackathons, and internships linked to each course

### Outcome of These Courses:

- Better placement readiness in AI/ML jobs (₹8–25 LPA range)
- Strong internship opportunities (including remote global options)
- Eligibility for top MS/PhD programs or AI research roles
- Preparation for freelancing or launching AI startups

## CELLS/CLUBS at MIT

### Cell/Club Name

- AI & Machine Learning Club
- Robotics & Autonomous Systems Club
- Data Science & Analytics Club
- AI Research & Paper Writing Cell
- AI Industry Connect Cell
- AI in Gaming and RL Club
- AI Ethics & Policy Forum

### Why It's Needed

- Core technical skills, community building
- Real-world AI integration with hardware
- Career prep for analysts and ML engineers
- Academic, MS/PhD profile building
- Placement & internship visibility
- Creative, real-time AI applications
- Critical thinking on the future of AI

## Integration with External Bodies

Encourage collaboration with:

- NASSCOM AI Center of Excellence
- IEEE Computational Intelligence Society
- Google Developer Student Clubs (GDSC)
- AWS Educate / NVIDIA DLI Campus programs

## MIT Mumbai: Support for AI/ML Entrepreneurship

### 1. Dedicated AI/ML + Startup Cell

- A student-run AI entrepreneurship club could host:
  - “Build-a-startup-in-a-weekend” challenges
  - Ideation-to-pitch bootcamps
  - Co-founder meetups for AI enthusiasts

### 2. Incubation & Funding Opportunities

- MIT will introduce incubation arms (like MI TBI – Technology Business Incubator).
- Students can get:
  - Seed funding
  - Mentorship
  - Access to investor networks
  - Cloud credits (AWS, Google Cloud for Startups)

### 3. Industry Hackathons & Competitions

- Participate in external AI hackathons:
  - Smart India Hackathon
  - T-Hub Startup India
  - NVIDIA AI Challenges
  - Global AI Bootcamps



MIT can host **its own internal hackathons** focused on real-world AI problems in logistics, traffic, education, etc.

### 4. Partnerships with Industry

- Collaboration with:
  - Microsoft for Startups
  - AWS Activate
  - NASSCOM 10,000 Startups
  - NVIDIA Inception

These partnerships give **AI founders access to cloud compute, mentorship, and visibility.**

## Career Prospects for AI/ML Graduates

Graduates of AI/ML programs at MIT Mumbai can pursue various career paths, including:

- Data Scientist
- Machine Learning Engineer
- AI Engineer
- Business Intelligence Developer
- Big Data Engineer
- Cloud Architect
- AI Data Analyst